

LULAC HEAD START INC. • ANNUAL REPORT 2025-26

WE ARE BETTER TOGETHER

JUNTOS SOMOS MEJORES



(203) 777.4006 • 250 Cedar Street, New Haven, Ct 06519
www.LULACHeadstart.com







LULAC Head Start Inc.

DEVELOPING CHILDREN, FAMILIES AND THE COMMUNITY FOR LIFE

TABLE OF CONTENTS

- 4-5** What LULAC Stands For
- 6-7** Letter From the Executive Director
- 8-9** Demographics: Health & Family Services
- 10** Child Outcome Data
- 11** Program Funding
- 12** Workforce Development Highlights
- 13** Demographics: The LULAC Team
- 14** Letter from the Board
- 14** Leadership
- 15** Community Partners



WHAT LULAC STANDS FOR



MISSION:

Developing children, families and the community for life.

VISION:

LULAC envisions setting the highest standard of quality and excellence in comprehensive early childhood programming in New England by increasing all children's school readiness for kindergarten, fostering family development and creating lifelong learners in our communities.

LULAC WILL:



STRENGTHEN children's transition across the program and into kindergarten.



INCREASE the social-emotional school readiness skills for all children enrolled.



INCREASE parent engagement in their children's early learning.



CREATE a culture of health and safety across the agency.



ENHANCE the program's systems for continuous quality improvements.

LULAC VALUES:

Service

We are committed to providing childcare and family services that promote school readiness skills and enhances our community.

Collaboration

We collaborate with a diverse community to achieve a shared vision of advocating for and providing early childhood learning and development.

Health

We promote the health, safety and wellness of our children, families, staff, workplace culture and community

Organization

We organize as a professional team of staff, stakeholders and partners who effectively support our work and business structure.

Leadership

We lead compassionately and boldly in our commitment to creating a positive difference in our community.

Advancement

We promote a love of learning with meaningful knowledge that empowers and promotes the development of lifelong learners and community leaders.

Respect

We honor all individuals and abilities, creating an inclusive and equitable environment where diversity is valued and celebrated.

Success

We champion individual achievement and success of our children, families and staff and partner with them to meet their goals.





LETTER FROM THE EXECUTIVE DIRECTOR



Dear Friends,

I am so thankful to everyone who has contributed in small or big ways to helping us make 2025 another impactful year for the children and families we serve in New Haven. Our program continues our commitment to developing and making a difference in the community, and we are grateful for the 43 years that we have been able to serve the children and families of New Haven.

This year, our theme was “We Are Better Together” or “Juntos Somos Mejores”, and we worked wholeheartedly to strengthen our partnerships in childcare, especially with our families as we offered more family engagement and community events. And together, we continue to address the challenges in our community such as an increase in mental illness, food insecurity and homelessness. Our dedicated staff has done an incredible job of serving our children, expanding our outreach, and strengthening our programs and services. LULAC remains an exemplary childcare program that is child-centered and community driven. We have once again been able to serve over 400 families in Greater New Haven with high-quality comprehensive services that support children and family development and their preparedness for school.

Our mission is “Developing our children, families, and community for life”, and LULAC Head Start Inc. is stronger than ever due to our continued commitment to supporting our mission in all that we do. We will strive every year to be better than we were the year before as we stay true to the program mission and needs of the community.

A few program highlights from this year include:

- ✓ Providing high quality childcare and social support services to over 400 children and their families.
- ✓ Successfully graduating 76 preschoolers and supporting their transition into kindergarten.
- ✓ Expanding our services in the community with a prenatal program in partnership with Empowered Beginnings, LLC.
- ✓ Offering a statewide Early Childhood Educator Apprenticeship Program, supporting 23 teachers in obtaining their credentials
- ✓ Supporting 5 of our staff in earning their associate and bachelor's degrees in early childhood education

I want to especially extend a heartfelt thank you to our amazing employees, volunteers, consultants, partners and many advocates who support our important work and mission. In addition, we greatly appreciate the families who partner with us every day. We are honored to have you choose LULAC for your children's early learning experience.

Lastly, thank you to all stakeholders for being a part of LULAC Head Start Inc. We are a non-profit organization that positively impacts the Greater New Haven community. Your commitment and passion for quality childcare are a huge part of our success, and we look forward to even greater success in the years ahead!

Sincerely,



Mikyle Byrd-Vaughn, Executive Director



EMPLOYEE DATA

100%

Feel proud to work for LULAC

97%

Feel supported by their supervisor

84%

Feel that LULAC is a great place to work

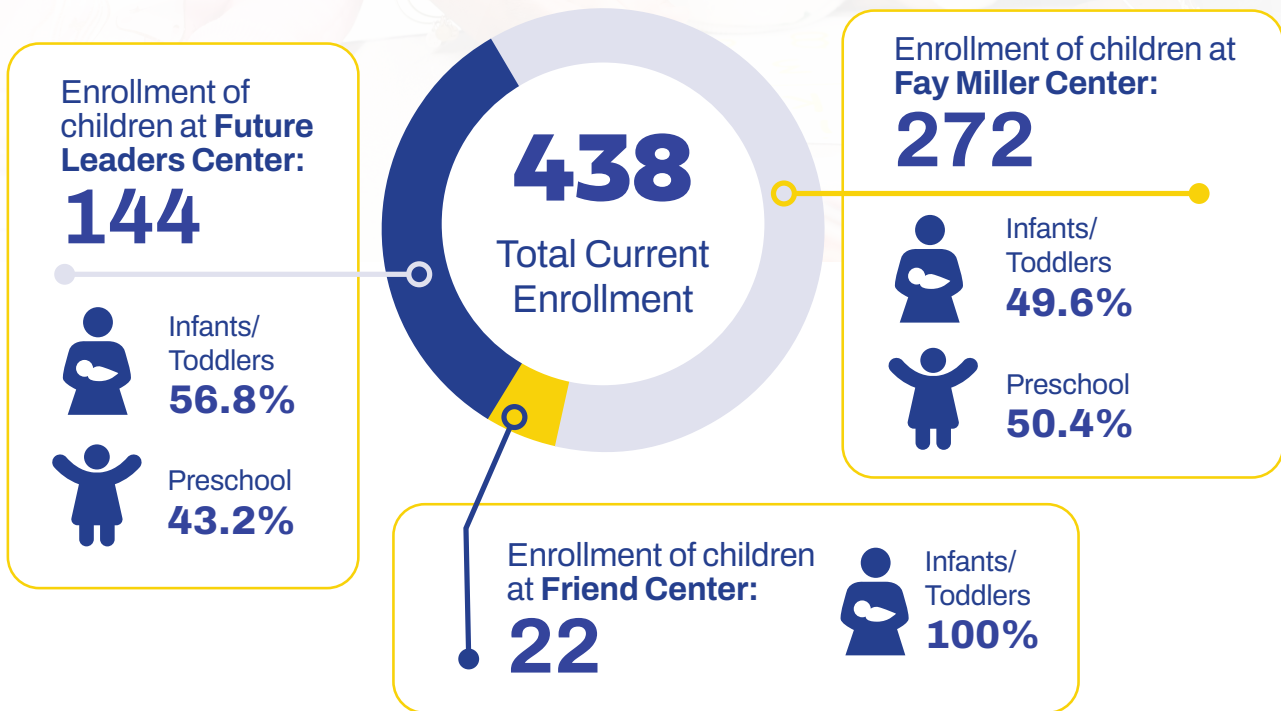
96%

See themselves working at LULAC a year from now

DEMOGRAPHICS: HEALTH AND FAMILY SERVICES



ENROLLMENT AND ATTENDANCE INFORMATION



Individual Family Support Plans



Individual Education Plans

LULAC proudly serves children and families in East Haven and New Haven for its infant/toddler program (Early Head Start funding) and children in New Haven for its preschool program (School Readiness and Head Start funding), ages 8 weeks to 5 years old, preparing children for Kindergarten.



FAMILY DATA

100%

Feel that **LULAC** is a **partner** with them in their child's development

95%

Feel that **LULAC** is **preparing** their children for kindergarten

99%

Report **teacher's work with them** in supporting their children's individual needs

98%

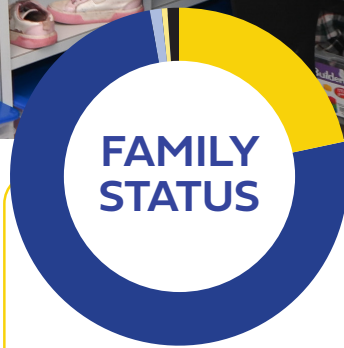
Feel that it is **important** for their child to attend **LULAC** daily

96%

Report that **LULAC** has **helped their family** in addition to working with their children

100%

Feel that their **children** are **learning** because of attending **LULAC**



133
Low Income Families

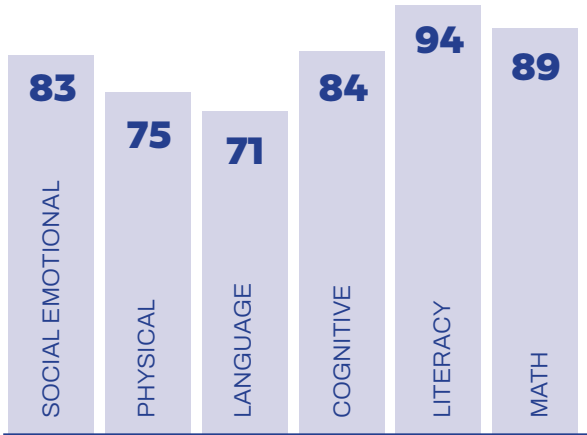
35
Families Experiencing Homelessness

13
Families Placed in Permanent Housing

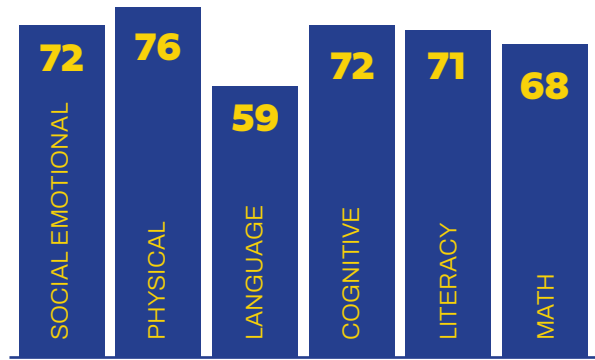
CHILDREN'S OUTCOME DATA



Infant/Toddler • 2023-2024



Preschool • 2023-2024



Percentage of Children Meeting or Exceeding Areas of School Readiness Development

HEALTH



100%

Children Had Medical Homes



95%

Children Had Dental Homes



Children With Special Needs

22%
Infants/Toddlers

14%
Preschool

PROGRAM FUNDING

FEDERAL FUNDING

Head Start	\$833,392
Early Head Start	\$1,561,458
CCP	\$1,634,394
CACFP	\$300,676
Other Fed Funds- ARPA	\$65,193
Subtotal	\$4,425,113

STATE FUNDING

EHS-CCP & WS	\$690,000
WPP	\$232,059
School Readiness	\$1,219,911
State Head Start	\$209,834
CHEFA	\$75,815
OEC/CDC	\$1,108,650
Subtotal	\$3,536,269

GOVERNMENT GRANTS: **\$7,961,382**

SERVICE & PROGRAM FEES: **\$1,533,831**

INVESTMENT, CONTRIBUTIONS & OTHER INCOME: **\$472,399**

SUPPORT & REVENUE:
\$9,967,612

WORKFORCE DEVELOPMENT HIGHLIGHTS



13
total
credentials
earned

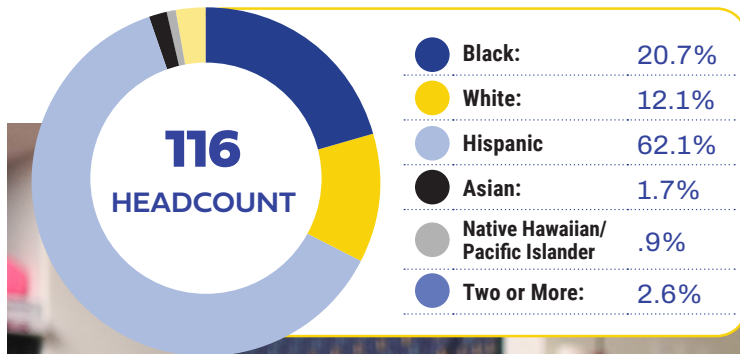
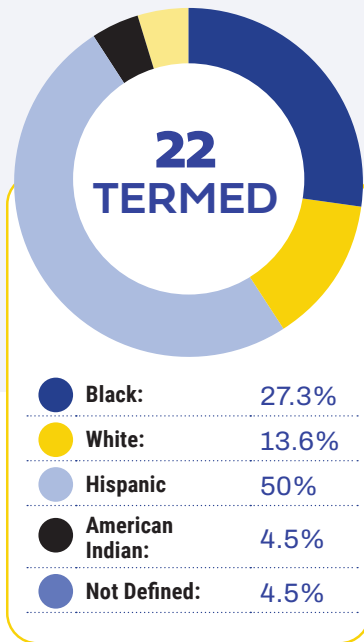
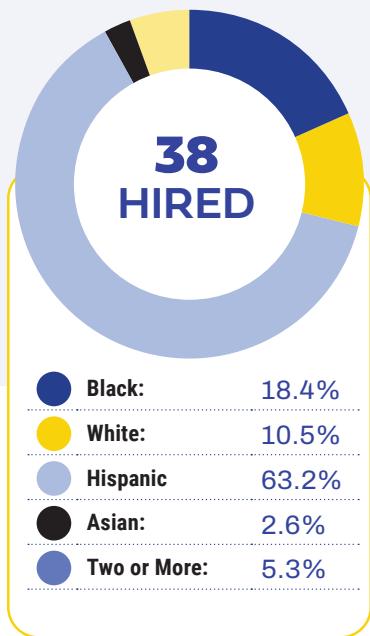
8
new CDA
credentialed
educators

5
college
degrees
earned

During the 2024–2025 school year, our program continued to invest in workforce development and professional growth. A total of 13 staff members earned new credentials, including 8 Child Development Associate (CDA) credentials, 3 Associate degrees in ECE, and 2 Bachelor's degrees in ECE. These achievements strengthen classroom quality, support compliance with Head Start and state requirements, and reflect our commitment to staff advancement and retention.

DEMOGRAPHICS:

The LULAC Team





LETTER FROM THE BOARD OF DIRECTORS

LULAC remains committed to delivering high-quality childcare services to the communities we serve. This mission is supported by a dedicated staff, strong leadership, engaged families and an active Board of Directors. Through this collaborative effort and focus on excellence, LULAC has established itself as the leading childcare provider at both the state and national levels. In June 2028, LULAC will proudly celebrate 45 years of service to the community and we look forward to marking this important milestone.

Sincerely,

Noel Grant, Board Chair/ President

Donna Henry, Vice President

Dr. Wilson Luna, Secretary

Orlando Jackson, Treasurer

Nicole Brown, Member

Dr. Dilice Robertson, Member

Carmelita Valencia-Daye, Member



LEADERSHIP Management Team

Mikyle Byrd-Vaughn

Executive Director

Mayra Ossa

HR Manager

Edita Tamulionyte

Social Services Manager

Danielle Abel

Education & Inclusion Coordinator

Anite Gelin

Education & Inclusion Coordinator

Angelina Gerena

Compliance Coordinator

Auria Roque

ERSEA Specialist

Elsa Rodriguez

Family Services Manager

Paul Perrelli

Individual Support Specialist

Leonor Cortes

Comptroller II

Elijah Aviles

Facilities Supervisor

Irma Marquez

Professional Development Specialist

Elsa Rodriguez

Data Coordinator

Angeline Rosario

Executive Administrative Assistant (Temp)

Community Partners

- ✓ Agency on Aging
- ✓ Clifford Beers Child Guidance Clinic
- ✓ Connecticut Children's Museum
- ✓ Cornell Scott Hill Health Center
- ✓ CT Parent Advocacy Center
- ✓ Department of Children and Families (DCF)
- ✓ Department of Public Health
- ✓ East Haven Board of Education
- ✓ Fair Haven Community Health Center
- ✓ Family Centered Services of CT
- ✓ Friends Center for Children
- ✓ Greater New Haven Chamber of Commerce
- ✓ Griffin Hospital
- ✓ Integrated Refugee & Immigrant Services
- ✓ Integrated Wellness Group
- ✓ New Haven Board of Education
- ✓ New Haven Free Public Library
- ✓ New Haven Health Department
- ✓ New Haven Reads (through School Readiness)
- ✓ Office of Early Childhood
- ✓ Tia Russell Dance Studio
- ✓ The Diaper Bank
- ✓ Women, Infants, and Children Program
- ✓ Workforce Alliance
- ✓ Yale Child Study





CONTACT US

Fay Miller Center

250 Cedar Street,
New Haven, CT 06519

Future Leaders Center

106 Haven Street,
New Haven, CT 06513

(203) 777-4006 • www.LULACHeadStart.org